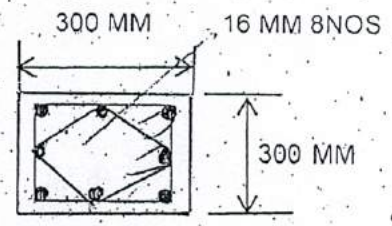
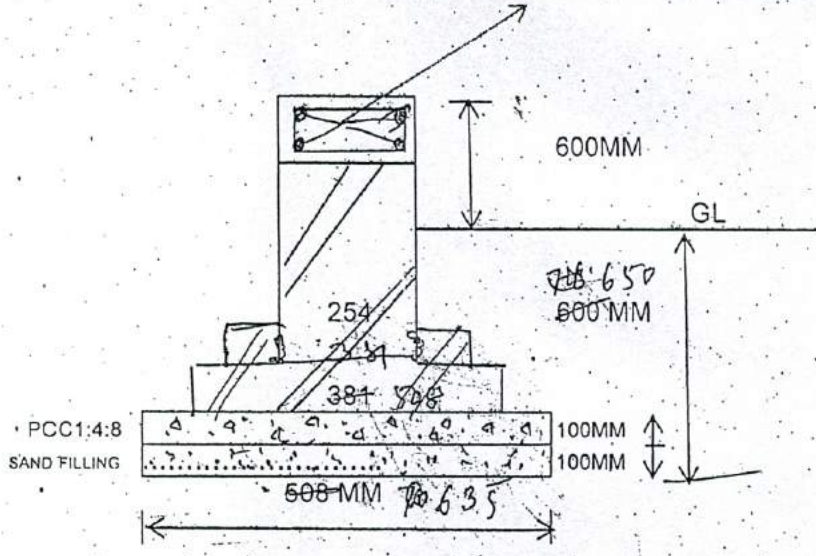


DRAWING NOT TO SCALE

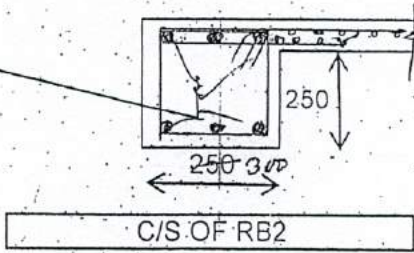
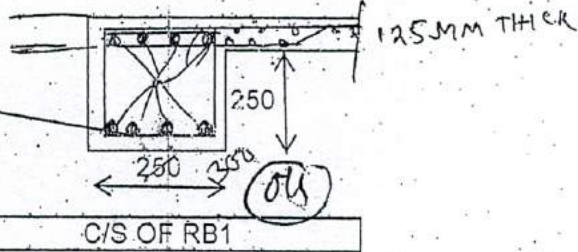
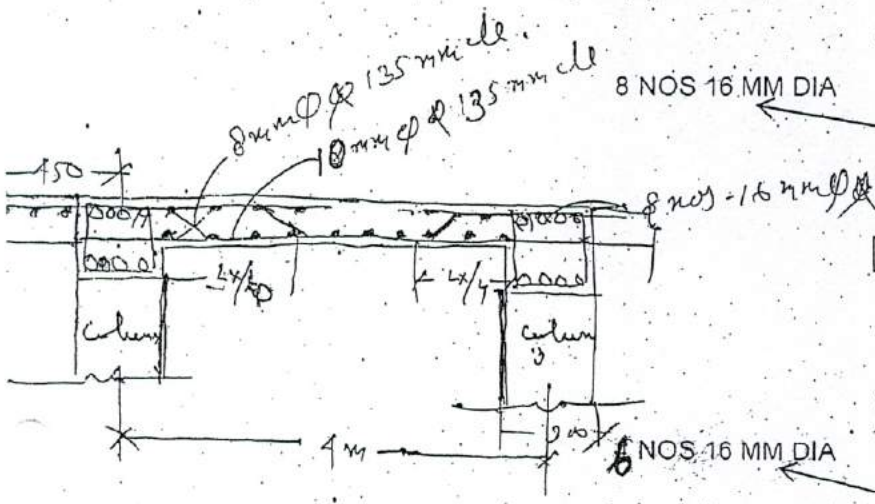


Prepared by
Er. SAHA ALAM
Junior Engineer, Gr-II
R.D. Udaipur Division
Udaipur, Gomati, Tripura.

PLINTH BEAM (250X250) 4 NOS 16 MM DIA



SECTION OF BRICK FOUNDATION



Prepared by

[Signature]

Er. SAHAJAM

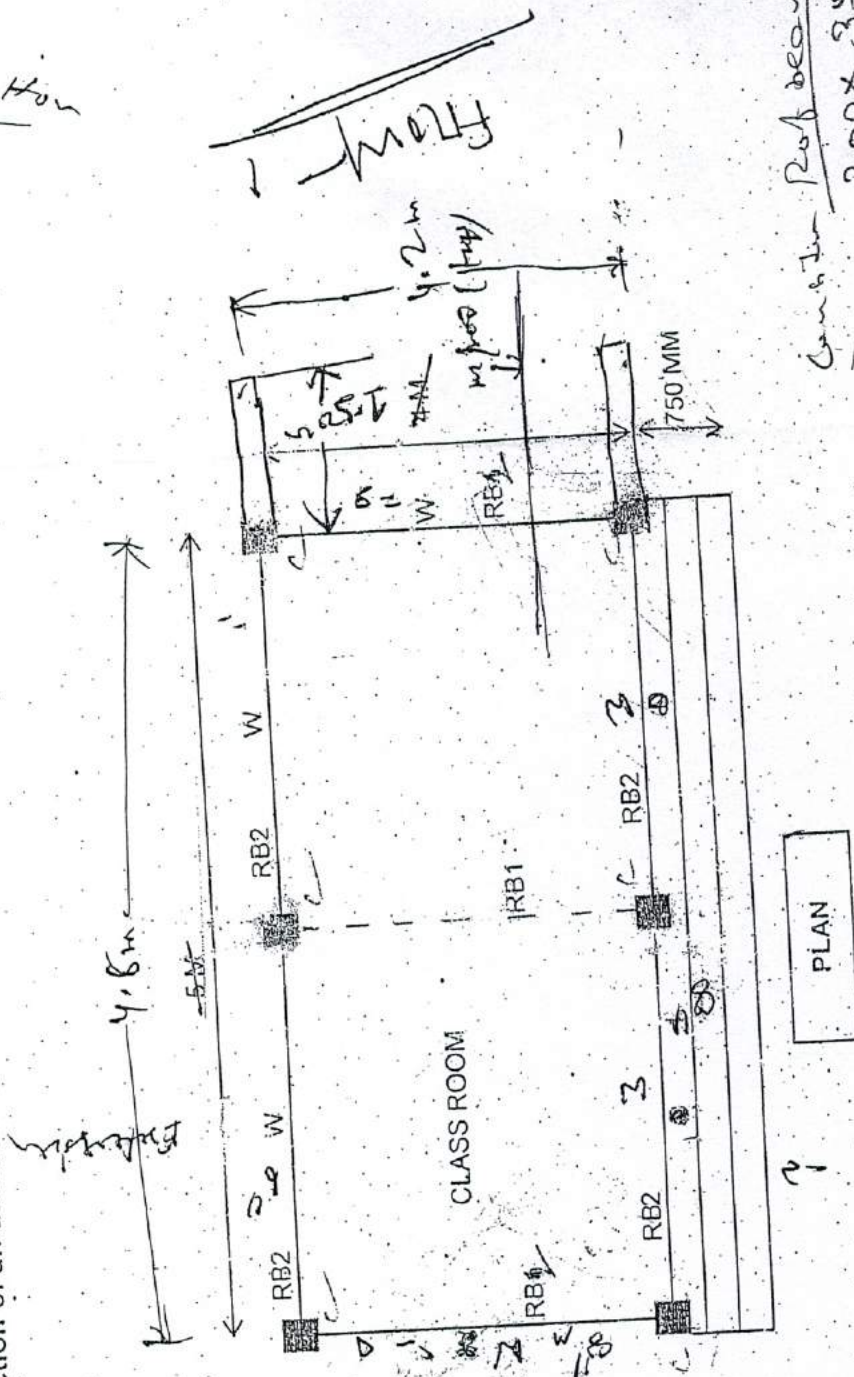
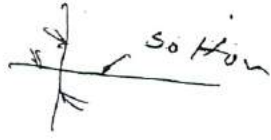
Junior Engineer, Gr-II

R.D. Udaipur Division

Udaipur, Gomati, Tripura.

DRAWING NOT TO SCALE

Construction of an additional class room of Netaji Vidya Niketan, Udaipur, Gomati District



Quantity Roof beams
300 x 350

Roof height = $3.280 + 0.125$
 $= 3.355 + 1.6040$
 $= 3.395$ say
 $= 3.400$ height
 $= 3.500$ beam
 3.050 slab

N.B.: DRAWING NOT TO SCALE

Prepared by
 S. S. S. S. S.
 Er. S. S. S. S. S. S.
 Junior Engineer, Gr-II
 Netaji Vidya Niketan, Udaipur, Gomati District